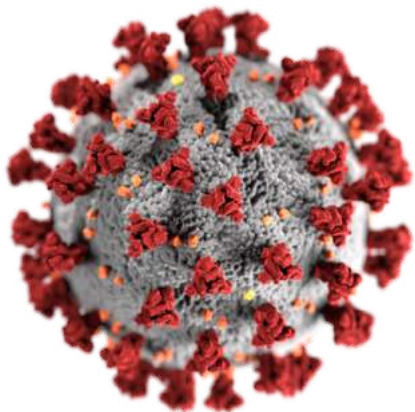


COVID-19 Pandemic in Africa

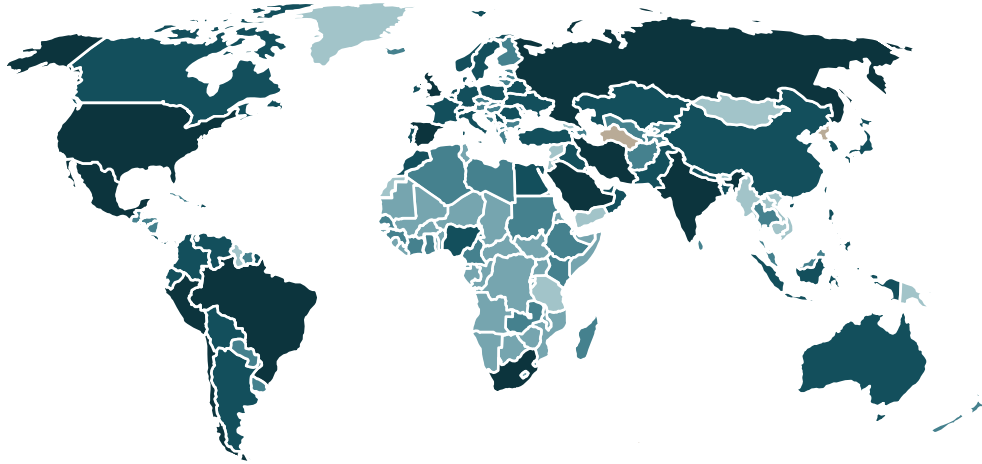
Why has the trajectory been different and what lessons can we learn from this?



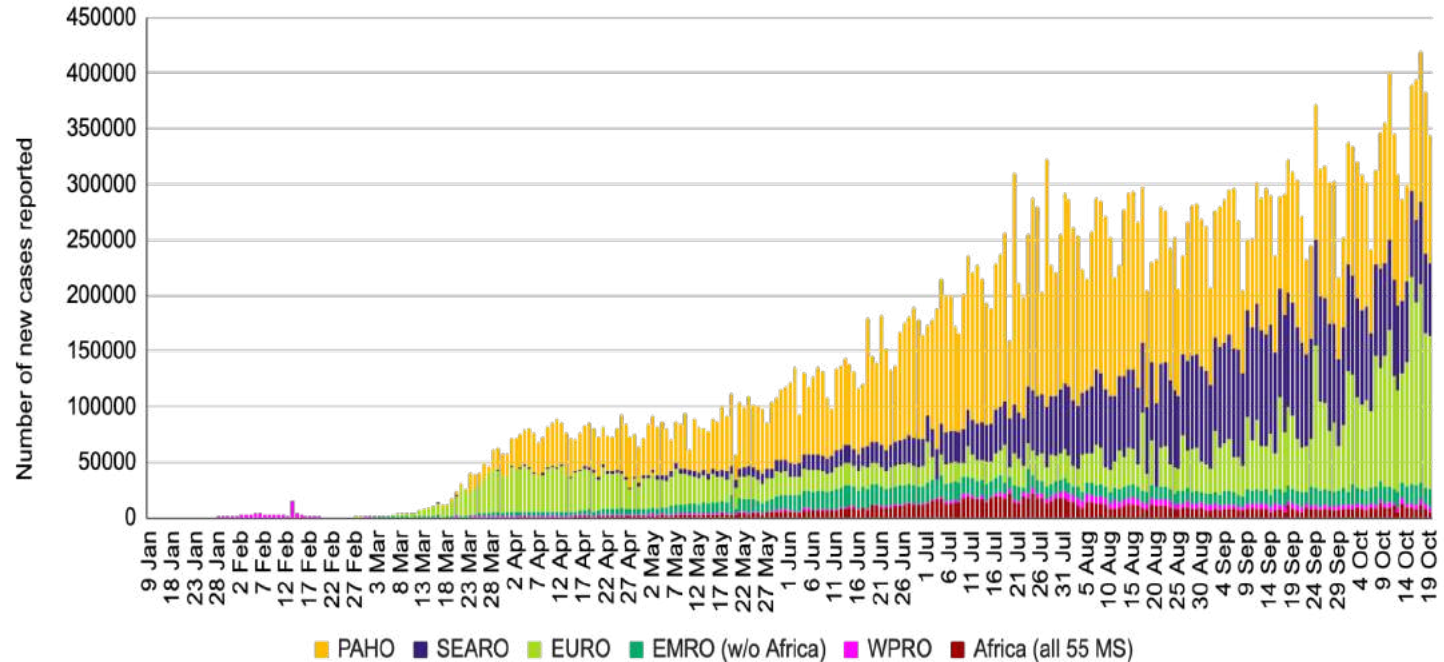
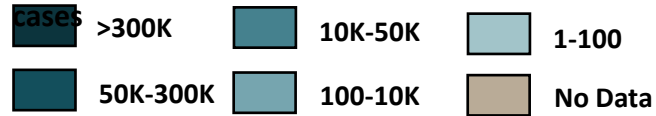
Global COVID-19 Situation

as of 3:05pm CEST 20 October 2020

New COVID-19 cases reported daily globally by WHO region from 9 January – 20 October 2020



Country, area, or territory reporting COVID-19 cases



>39M
Confirmed cases

>1M
Deaths

CFR: 2.6%

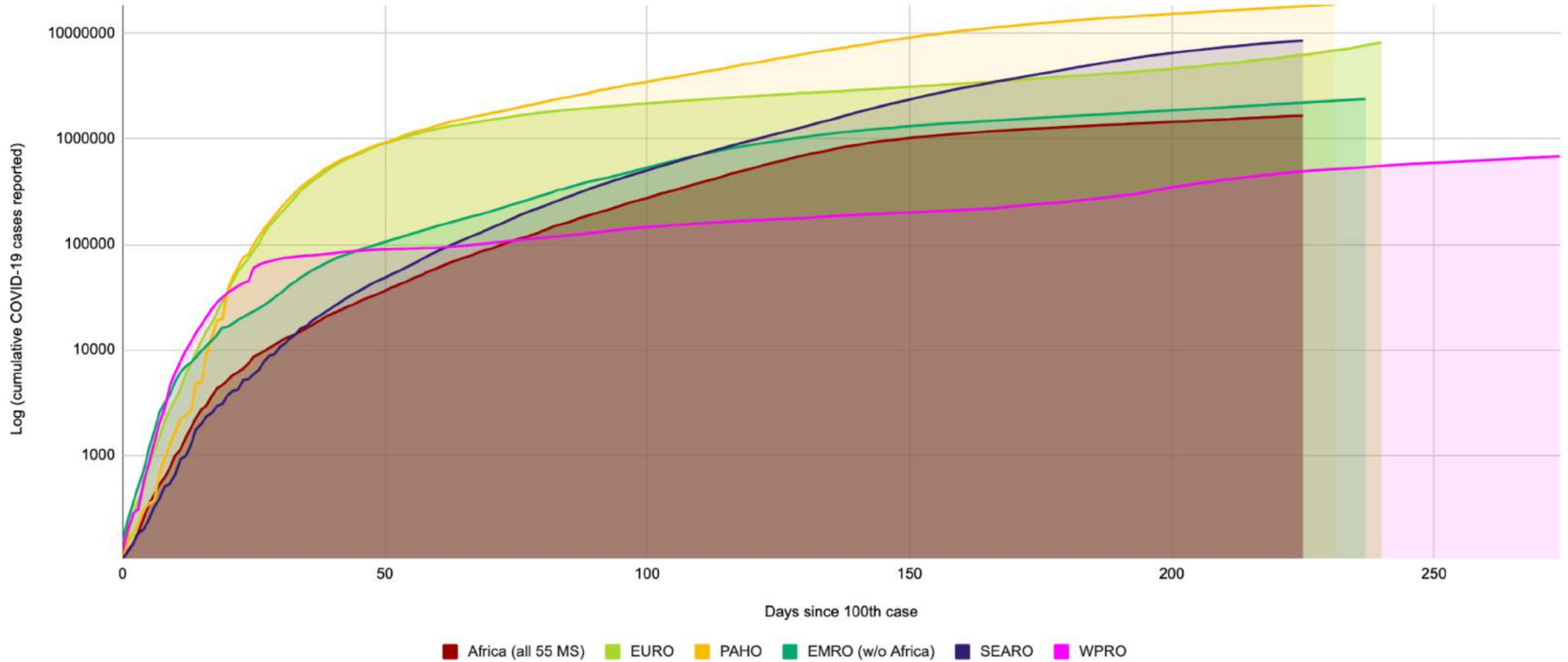
**Africa accounts for:
4% of all cases
4% of all deaths**

*Global numbers are taken from the latest WHO sitrep and dashboard:

<https://www.who.int/emergencies/diseases/novel-coronavirus-2019/situation-reports>; <https://covid19.who.int/>

COVID-19 cases*: Days since 100th case for WHO global regions

Comparison of the cumulative number of COVID-19 cases reported since the first 100 cases in each region

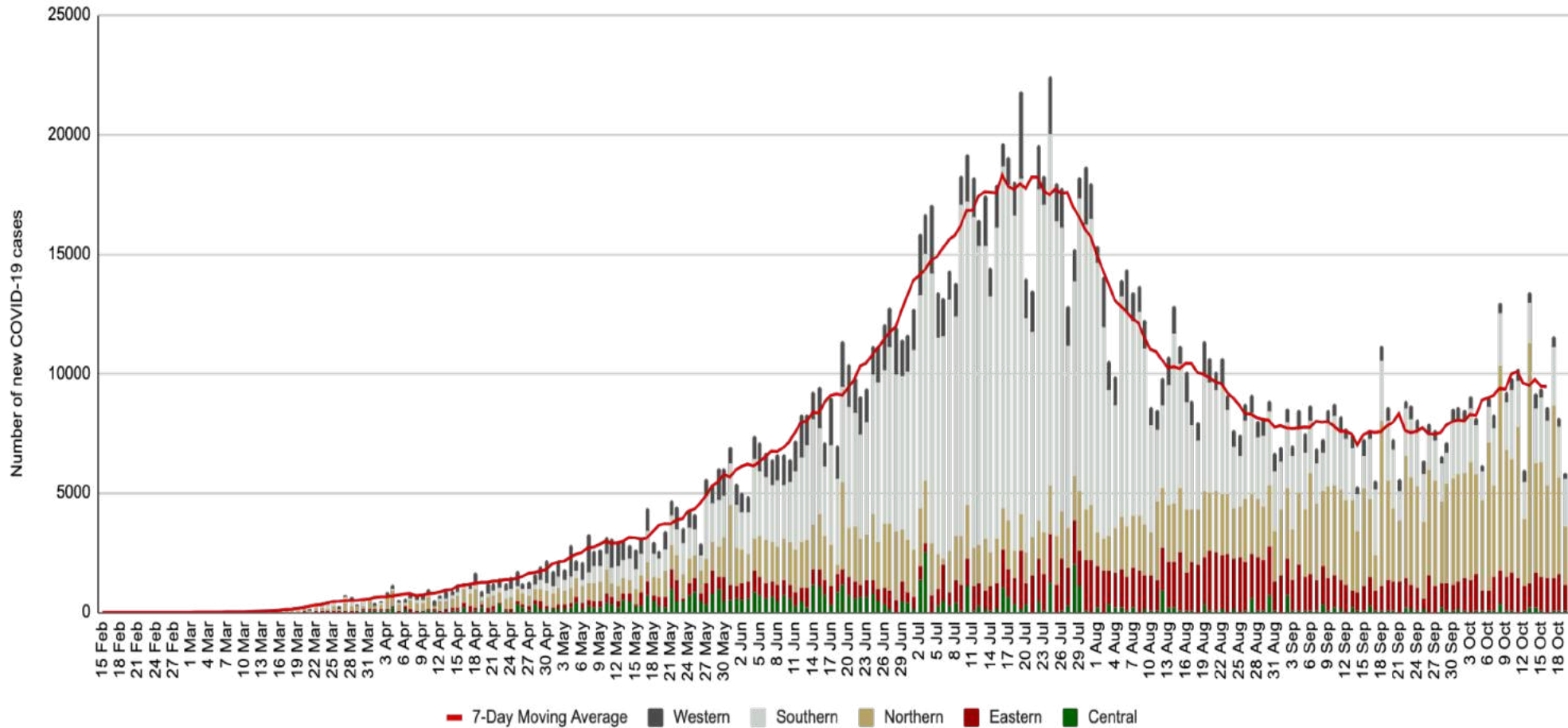


*Africa numbers are taken from official RCC and Member State reports.

COVID-19 Situation in Africa

as of 21 October 2020, 9am EAT

New COVID-19 cases* reported in Africa daily by AU Region from 15 February – 21 October 2020



>1.6M
cases

>40K
deaths

CFR: 2.4%

>1.3M
recoveries
(82%)

*Africa numbers are taken from official RCC and Member State reports.

As of 21 October 2020, 6pm EAT

Region	New* 20 October 2020			Cumulative 21 October 2020 9am			
	New* Cases	New* Deaths	New* Recoveries	Total Cases	Total Deaths	Cumulative CFR (%)	Total Recoveries
TOTAL	7,084	259	8,998	1,664,212	40,222	2.4	1,372,778
Central	65	1	0	59,487	1,128	1.90	52,889
Eastern	1,334	9	1,015	196,724	3,673	1.87	123,770
Northern	3,639	72	2,548	442,329	12,656	2.86	325,788
Southern	1,632	174	4,921	779,932	20,058	2.57	698,664
Western	414	3	514	185,740	2,707	1.46	171,667

*New numbers as of 20 October 2020. Data taken from official RCC and Member State reports

Cumulative COVID-19 incidence* by AU Member State as of 21 October 2020 9am EAT

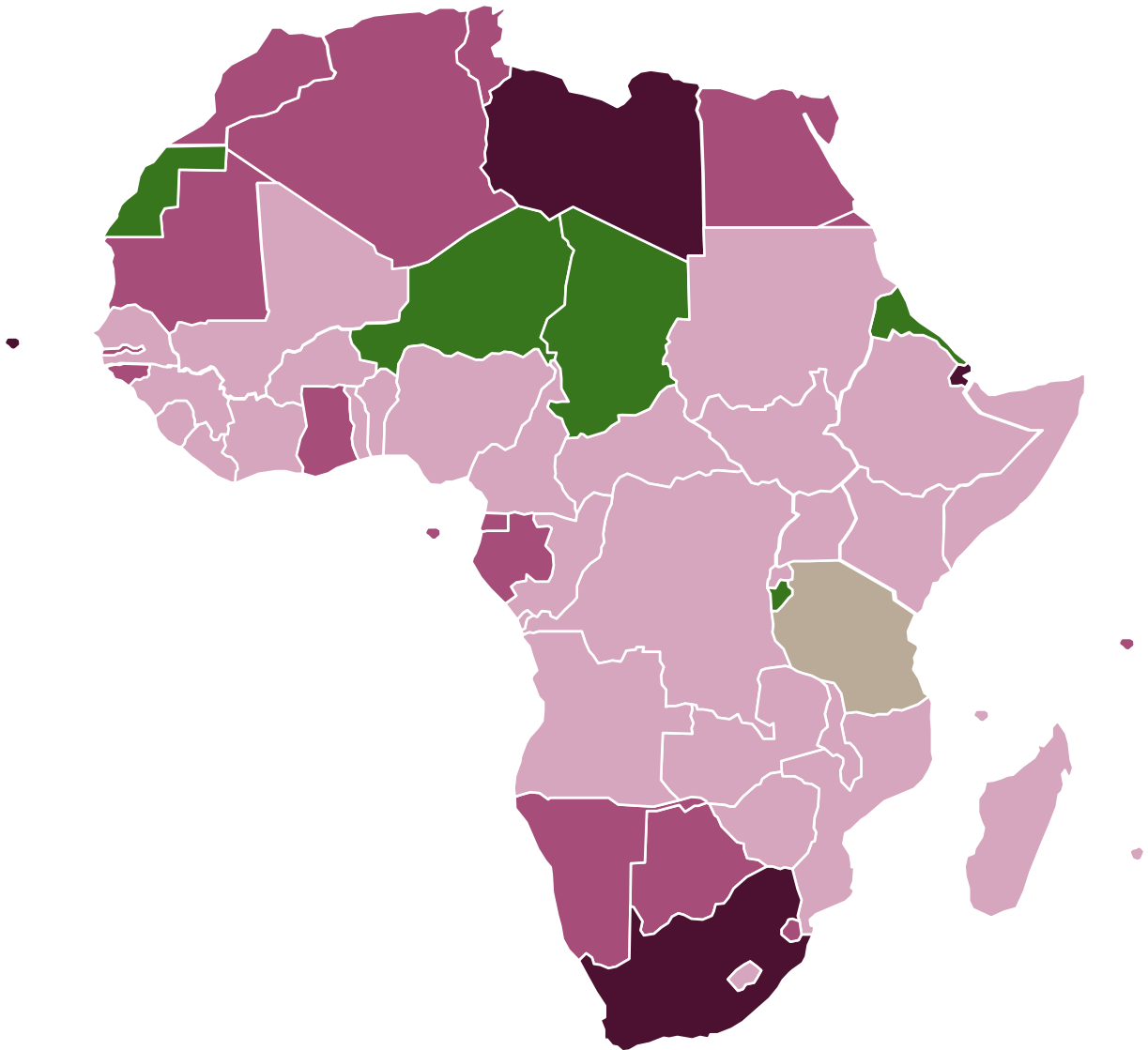
1
country
No data/report

5
countries
< 100 case
/1m pop

29
countries
100 - 1000 cases
/1m pop

16
countries
1001 - 5000 cases
/1m pop

4
country
>5000 cases
/1m pop



*cases/1,000,000 population as reported from official RCC and Member State reports.

Cumulative COVID-19 deaths* by AU Member State as of 21 October 2020 9am EAT

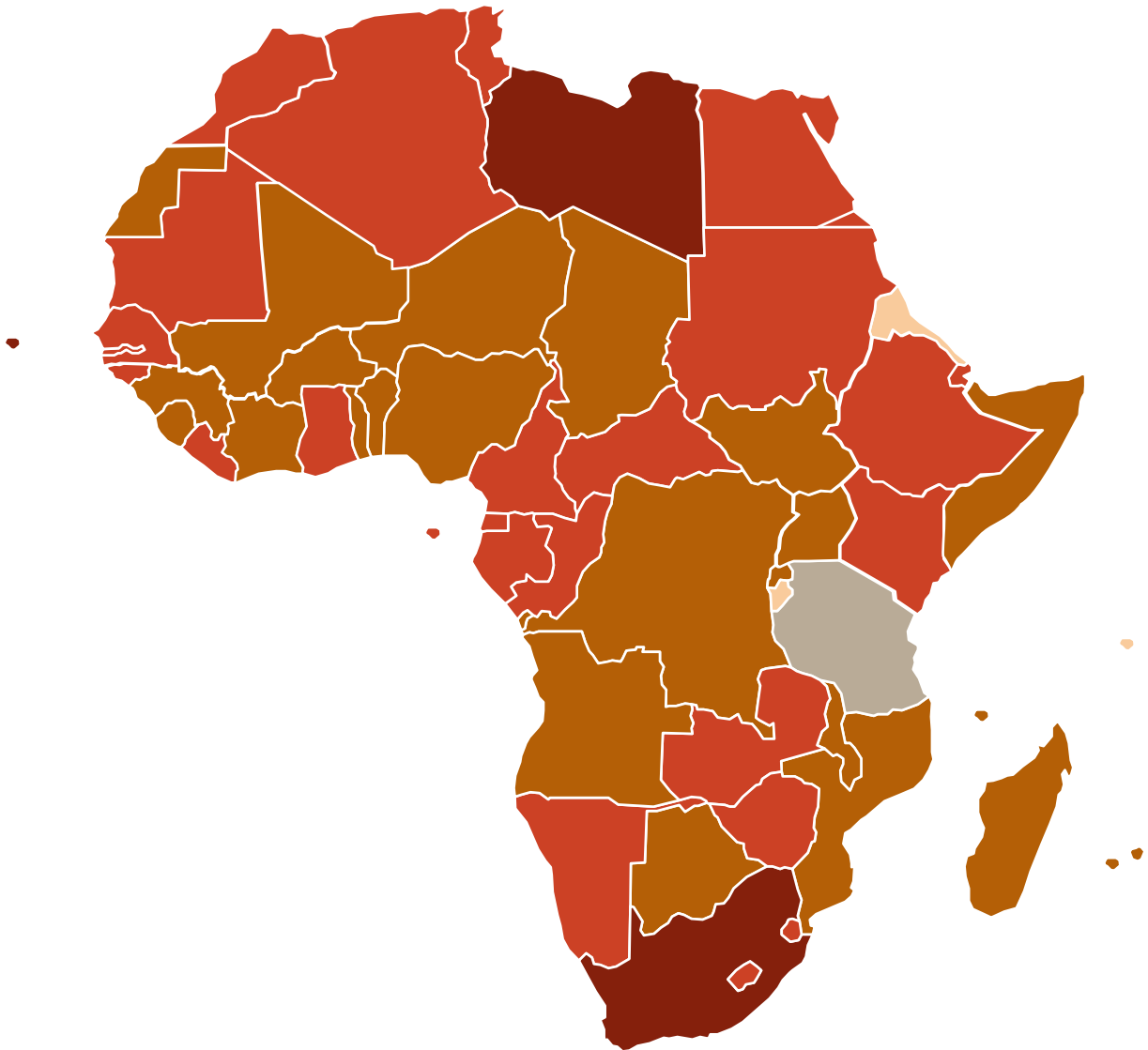
1
country
No data/report

3
countries
< 1 death
/1m pop

23
countries
1 - 10 deaths
/1m pop

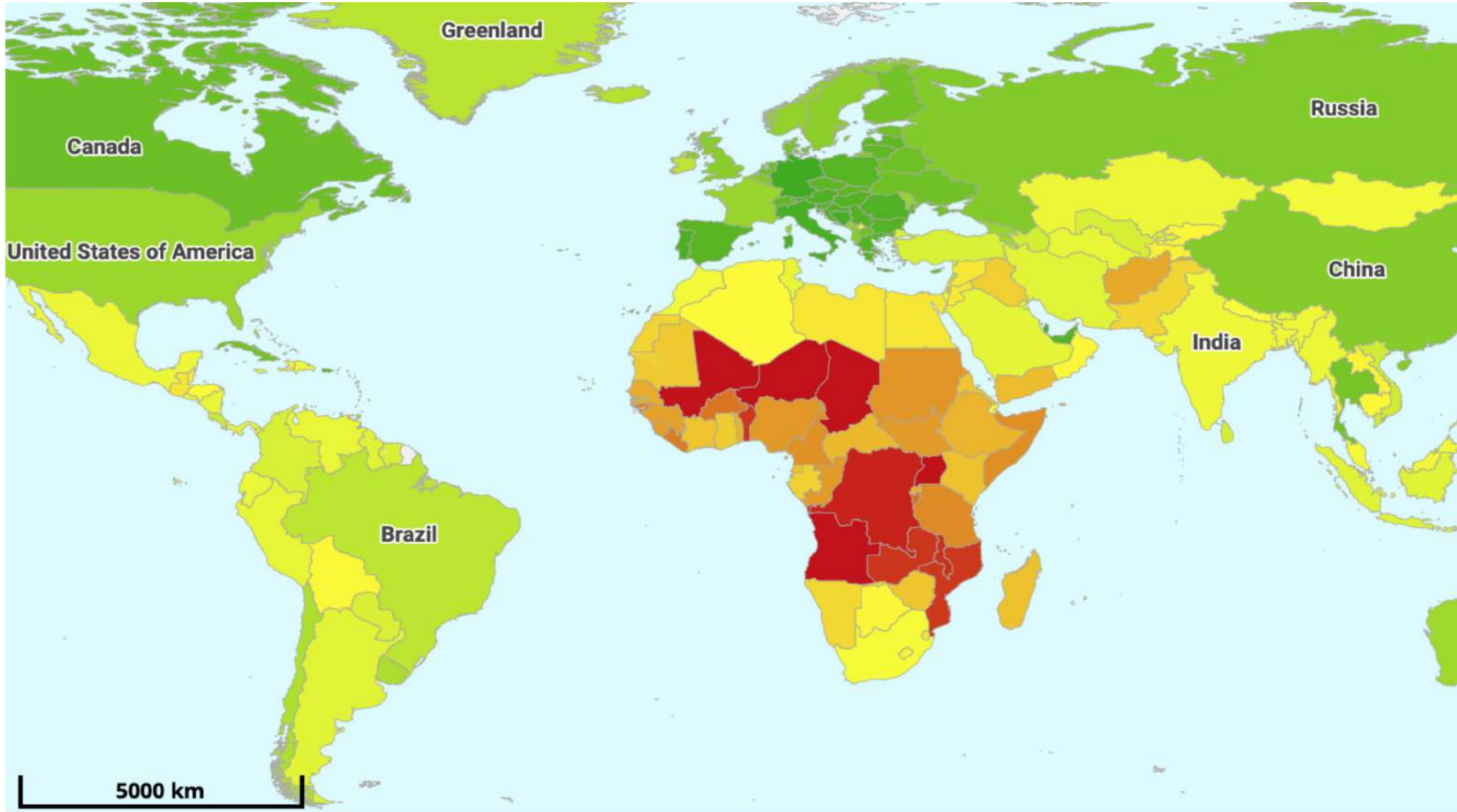
25
countries
10.1- 100 deaths
/1m pop

3
country
>100 deaths
/1m pop



*deaths/1,000,000 population as reported from official RCC and Member State reports.

Percentage* of the population with an age under 15 for the countries of the world

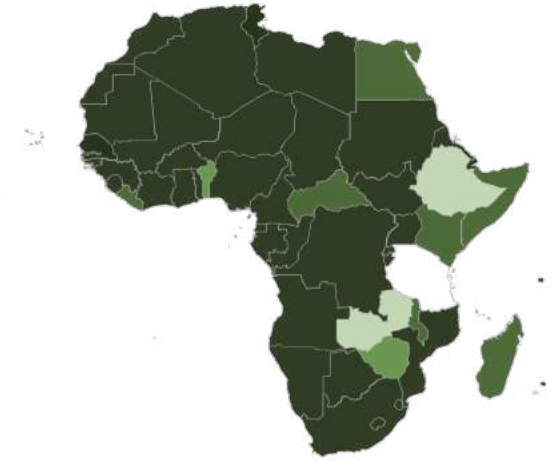


*<https://www.citypopulation.de/en/world/bymap/YoungPopulation.html>

Map of Member States imposing travel restrictions



1 Some countries still allow cargo, freight and emergency transport into and out of the country; Some MSs will still allow citizens and residents to enter but all borders are essentially closed
2 Banning entry or suspending visa issuance

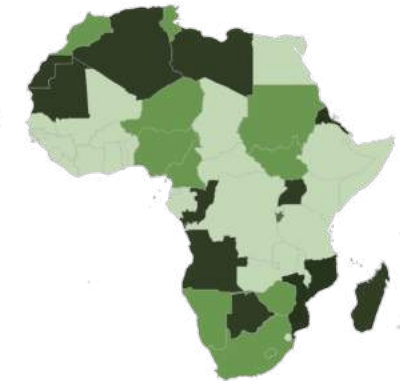


1 Some countries still allow cargo, freight and emergency transport into and out of the country; Some MSs will still allow citizens and residents to enter but all borders are essentially closed
2 Banning entry or exit of citizens or suspending visa issuance to specific countries

30 March 2020 23:00 EAT

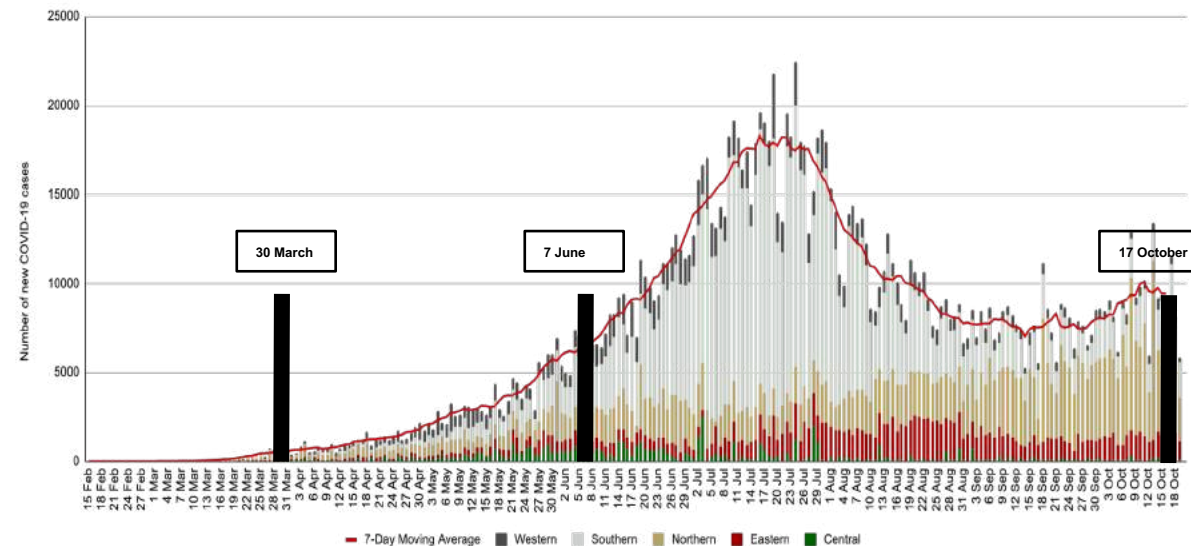
07 June 2020 20:00 EAT

Map of Member States that are imposing travel restrictions (as of 17 October 2020 20:00 EAT)



17 October 2020 23:00 EAT

1 Some countries still allow cargo, freight and emergency transport into and out of the country; Some MSs will still allow citizens and residents to enter but all borders are essentially closed
2 Entry or exit of passengers through COVID-19 screening





TEST, TRACE AND TREAT



Partnership to accelerate COVID-19 testing (PACT) in Africa

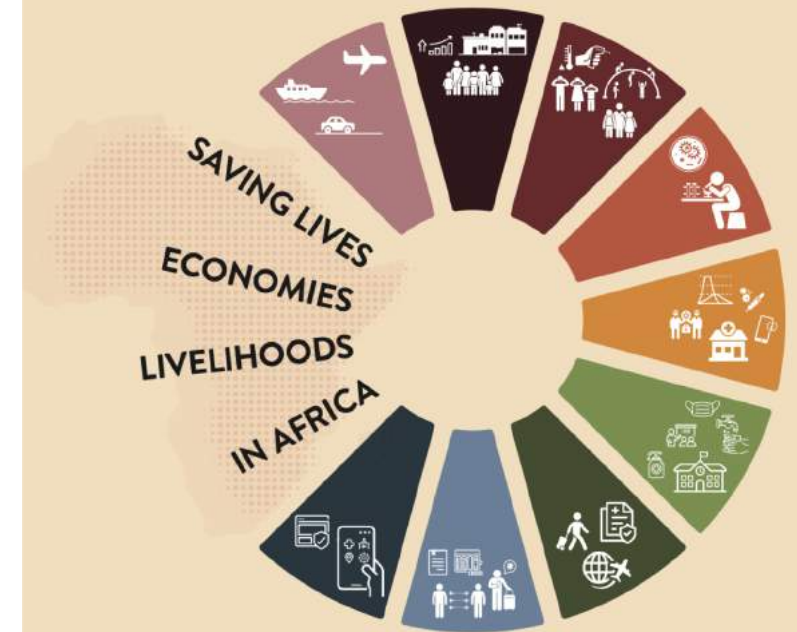
Africa CDC, in collaboration with partners and Member States, aims to achieve the following

PACT targets in Africa by October 2020



AFRICA AGAINST COVID-19

Saving Lives, Economies and Livelihoods in Africa

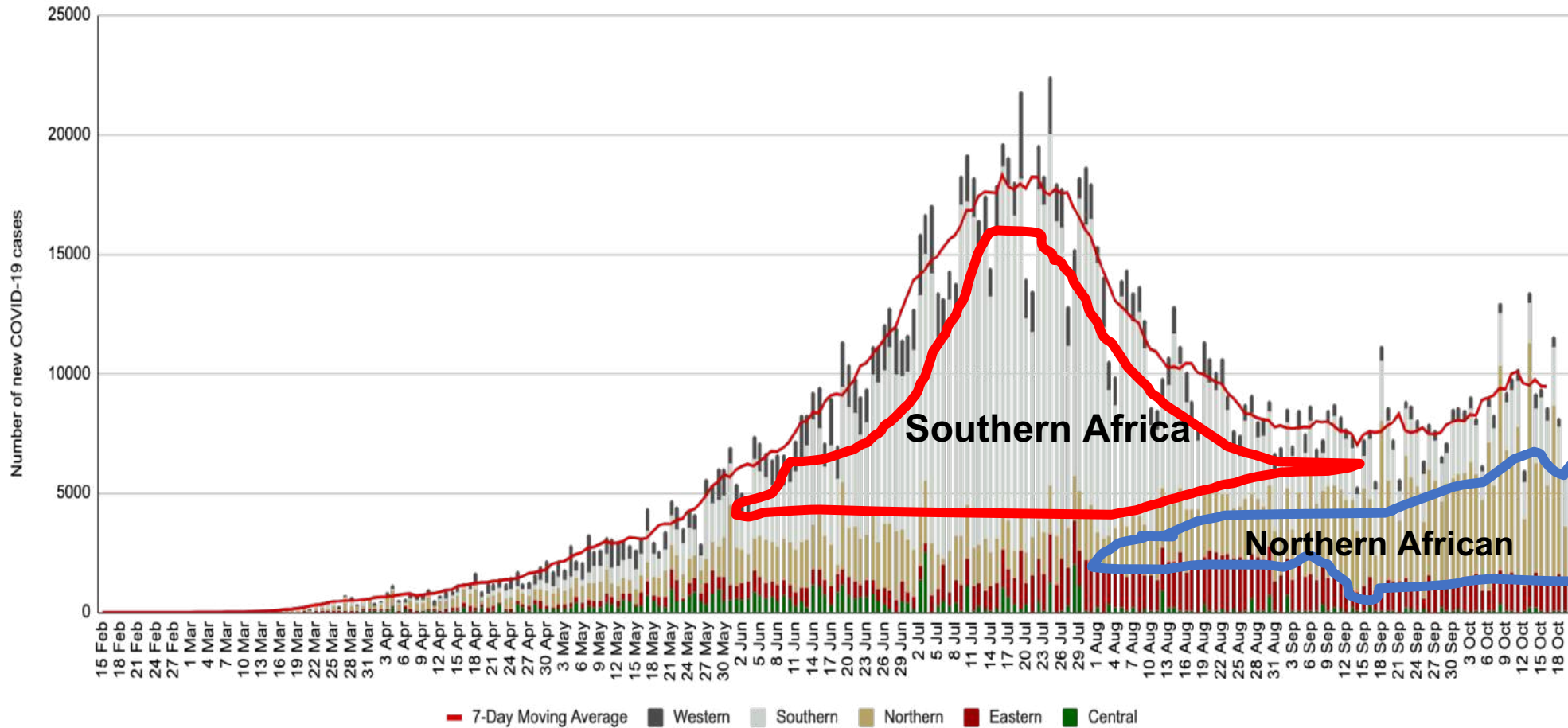


Promoting harmonized, standardized and coordinated entry and exit for travellers in African Union Member States through digital solutions

COVID-19 Situation in Africa

as of 21 October 2020, 9am EAT

New COVID-19 cases* reported in Africa daily by AU Region from 15 February – 21 October 2020



>1.6M
cases

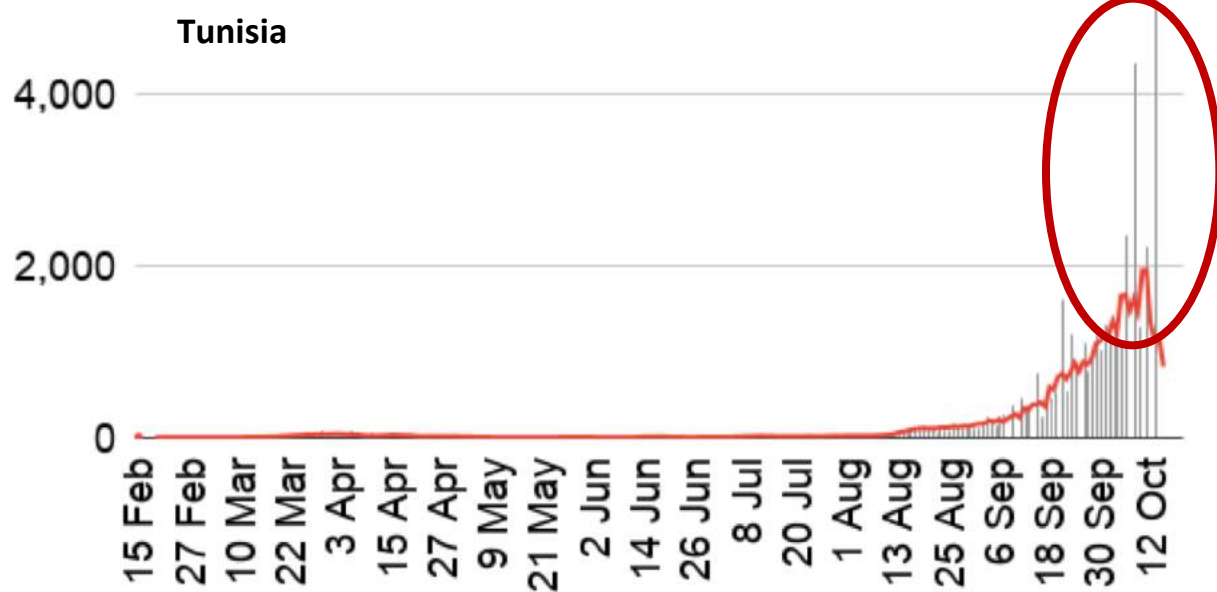
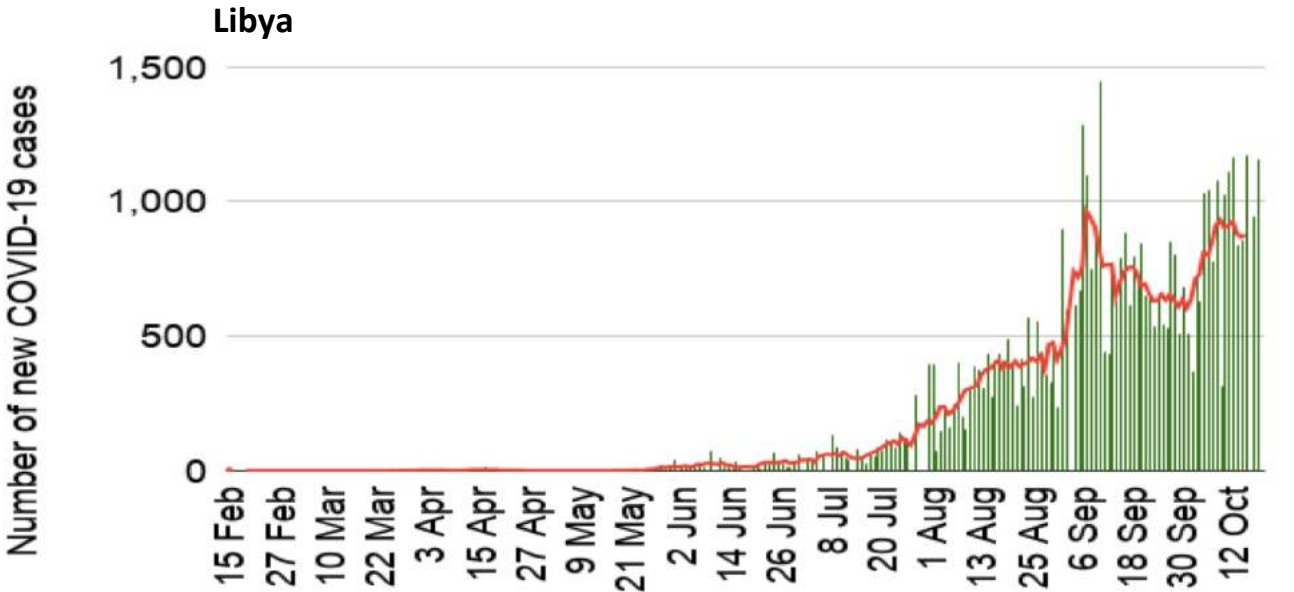
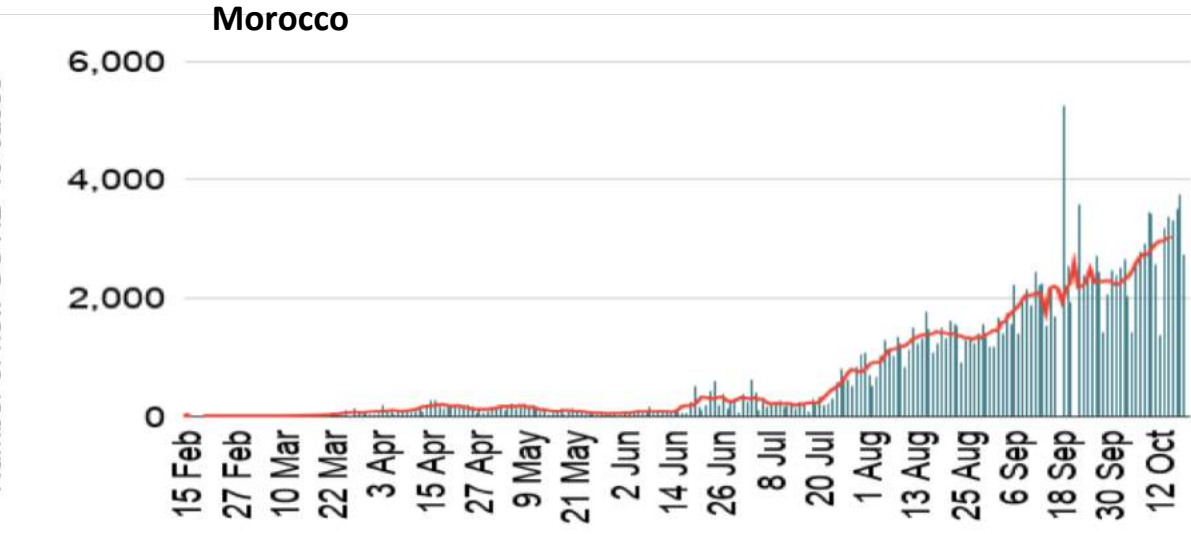
>40K
deaths

CFR: 2.4%

>1.3M
recoveries
(82%)

*Africa numbers are taken from official RCC and Member State reports.

Trend of COVID-19 cases*, Northern Africa Region



Kenya reopens bars, eases virus measures as cases fall

AFP • September 28, 2020



"We are the most vulnerable and fragile at the moment where we think we have won," Kenya's President Uhuru Kenyatta said

Kenyan President Uhuru Kenyatta on Monday allowed bars to reopen and restaurants to sell alcohol again as the rate of new coronavirus infections slowly declines in the East African nation.

What to Read Next



ROTH Capital Partners, NGO Sustainability with the Governments of Portugal, Kenya, and Sri Lanka Hosted a Virtual Side Event October 8, 2020

Business Wire



Stone grinding mill, fineness 20-3250 mesh ...

Ad • Lining Heavy Industry



War of now COVID-19 cases

Re



Much remains unknown

- more information is needed; data sharing mechanisms

Threat hasn't been abated

- joint strategies, strengthen regional and continental collaborations

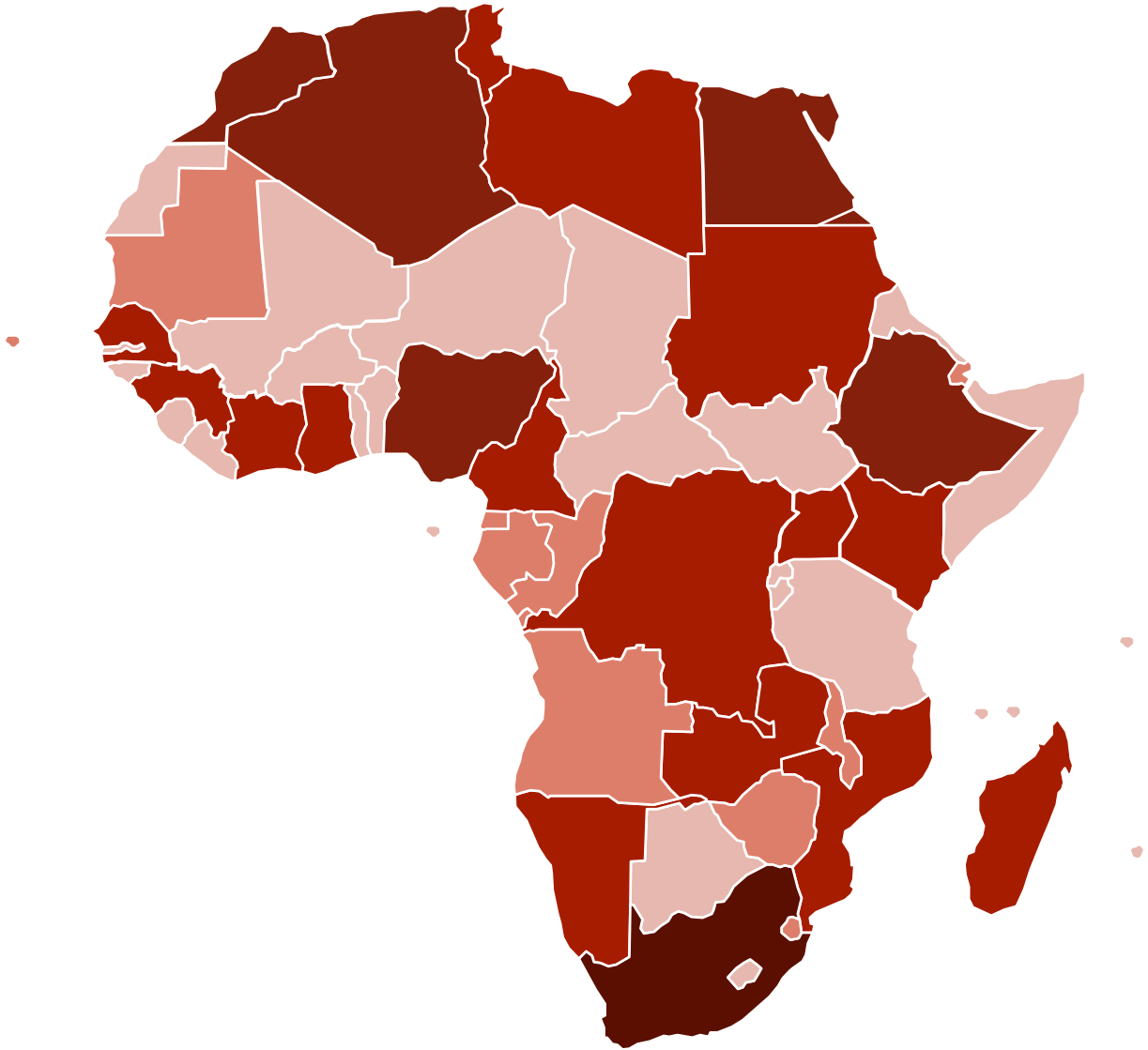
Thank you!

For more information please contact:
AfricaCDCEBS@africa-union.org

or visit our website at:
<https://africacdc.org/covid-19/>



Cumulative COVID-19 cases* by AU Member State as of 20 October 2020 9am EAT



*Africa numbers are taken from official RCC and Member State reports.

Map of Member States that are imposing travel restrictions

(as of 07 June 2020 20:00 EAT)

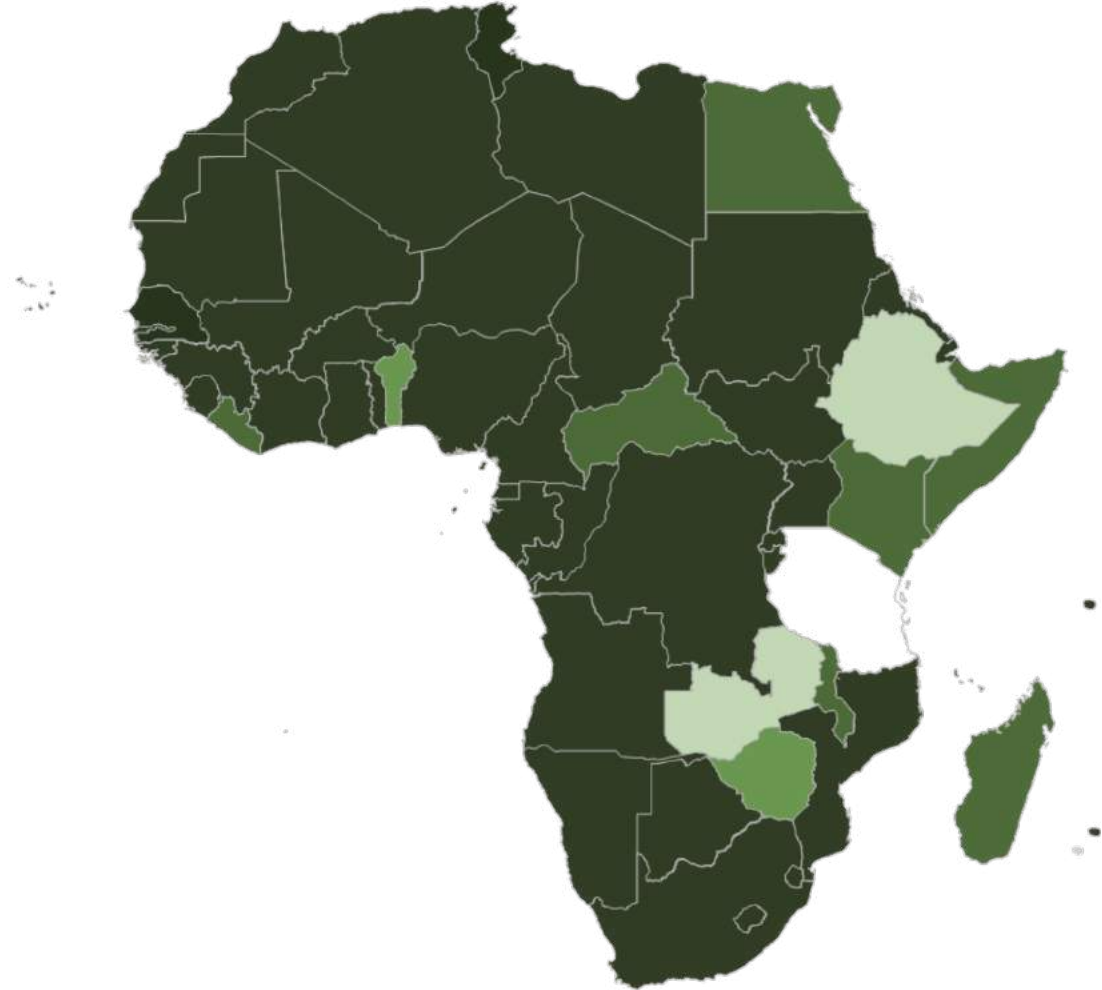


43
Full border closures¹

7
International air traffic closures

2
Travel restrictions to and from specific countries

2
Entry/ Exit restrictions²



Most Member States have imposed **mandatory quarantine** for all travelers or travelers arriving from high risk areas

- 1 Some countries still allow cargo, freight and emergency transport into and out of the country; Some MSs will still allow citizens and residents to enter but all borders are essentially closed
- 2 Banning entry or exit of citizens or suspending visa issuance to specific countries



38

Closure of country-wide educational institutions

- Lesotho, Botswana, Burundi, Niger, South Africa and Tanzania open



54

Limit public gatherings



20

Limit on prison and hospital visits



18

Mass screening & Testing



41

Public use of face masks/ cloths

Movement restriction



35



Night-time Curfews
Restrictions during a period of time in affected area or nationally
-10 countries imposed curfews only.
-21 countries included lockdowns.



21



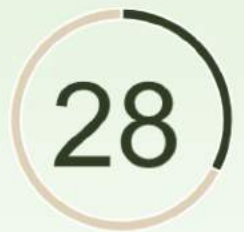
Partial lockdown
Restriction of non-essential movement within an area in the country
• Ghana lifted
• Benin lifted



16





National lockdown
Restriction of non-essential movement across the whole country
• Seychelles lifted
• Mauritius lifted



28



Easing the Mitigation Measures
Allowing more movement outside the home
More businesses allowed to open
Religious institutions allowed limited gatherings

of Member States that  Have implemented  Have not implemented

*Source of information based on official reports, embassy alerts and press scanning

Map of Member States that are imposing travel restrictions (as of 05 April 2020 20:00 EAT)



43
Full border closures¹

7
International air traffic closures

2
Travel restrictions to and from specific countries

3
Entry/ Exit restrictions²

Most Member States have imposed **mandatory quarantine** for all travelers or travelers arriving from high risk areas



- 1 Some countries still allow cargo, freight and emergency transport into and out of the country; Some MSs will still allow citizens and residents to enter but all borders are essentially closed
- 2 Banning entry or exit of citizens or suspending visa issuance to specific countries

■ Has implemented ■ Has not implemented

of Member States that have implemented specific social distancing measures

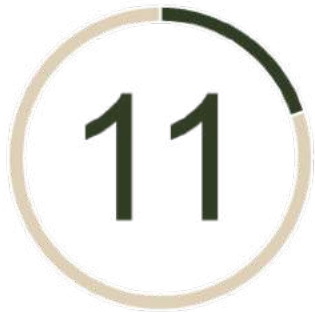


Closure of educational institutions



Banning of mass gatherings, closure of public spaces

One Member States with missing information/ not implementing the mentioned measures



Limitations on prison and hospital visits

Movement restriction



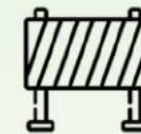
Night-time Curfews

Restrictions during a period of time in affected area or nationally
 -12 countries imposed curfews only.
 -11 countries included lockdowns.



Partial lockdown

Restriction of non-essential movement within an area in the country



National lockdown

Restriction of non-essential movement across the whole country

*Source of information based on official reports, embassy alerts and press scanning

Member States

(as of 31 March 2020 19:00 EAT)*

■ Has implemented ■ Has not implemented

of Member States that have implemented specific social distancing measures



Closure of educational institutions



Banning of mass gatherings, closure of public spaces

9 Member States with missing information/ not implementing the mentioned measures



Limitations on prison and hospital visits

Movement restriction



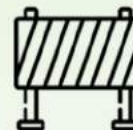
Night-time Curfews

-7 countries imposed curfews only.
-9 countries included lockdowns.



Partial lockdown

Restriction of non-essential movement within an area in the country



National lockdown

Restriction of non-essential movement across the whole country

*Source of information based on official reports and press scanning

Map of Member States that are imposing travel restrictions (as of 17 October 2020 20:00 EAT)

9

Full border
closures¹

1

International air
traffic closures

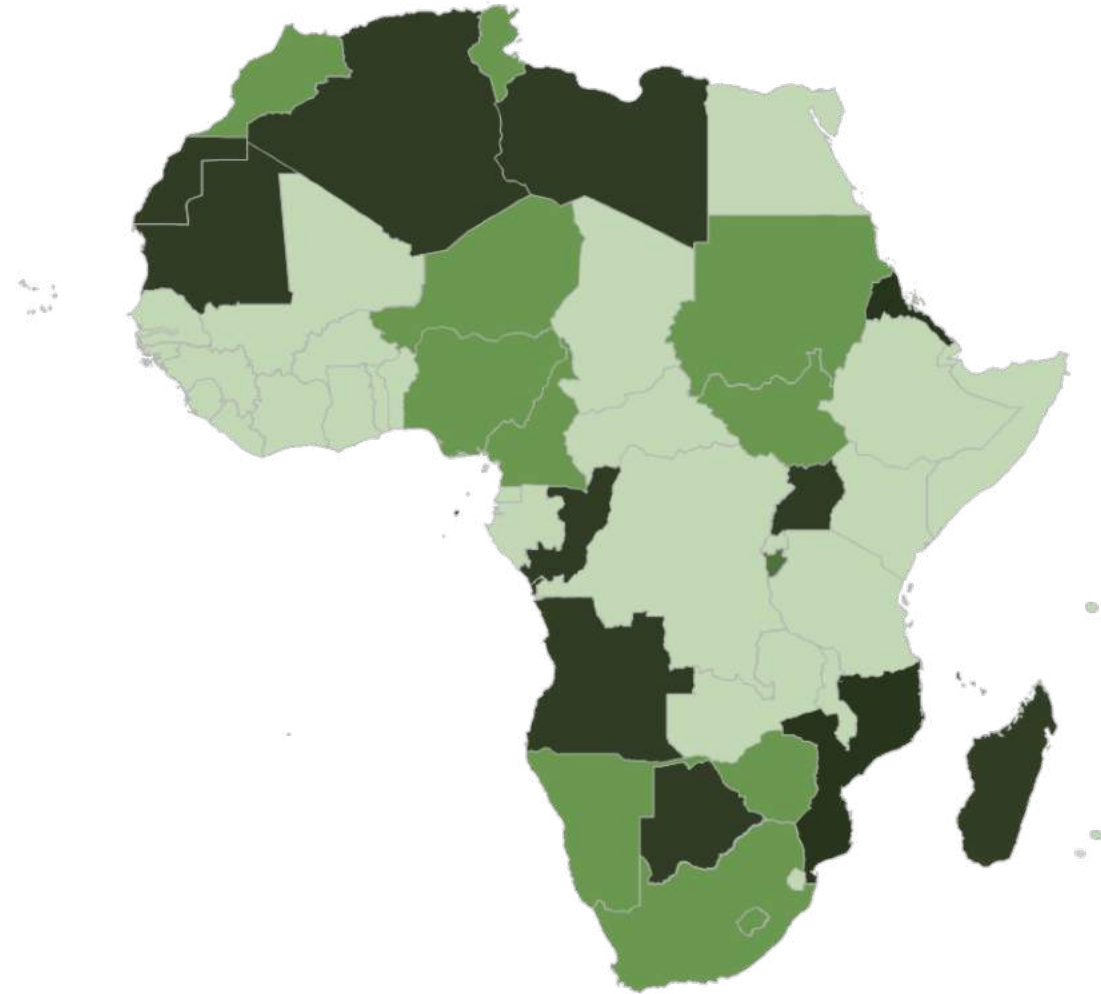
11

Travel restrictions
to and from specific
countries

34

Entry/ Exit
restrictions²

Most Member States have imposed **mandatory quarantine** for all travelers or travelers arriving from high risk areas



- 1 Some countries still allow cargo, freight and emergency transport into and out of the country; Some MSs will still allow citizens and residents to enter but all borders are essentially closed
- 2 Entry or exit of passengers through COVID-19 screening

Saving Lives, Economies and Livelihoods campaign (as of 17 October 2020 20:00 EAT)*

Borders



Commercial passenger flights



Open land and sea borders

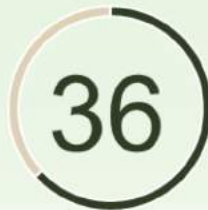
Screening measures**



Mandatory 14-day quarantine

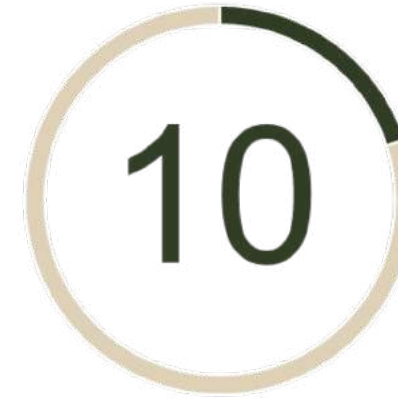


Mandatory testing at border



Prior negative test

School Reopening



Closure of country-wide educational institutions

of Member States that Have implemented Have not implemented

*Source of information based on official reports, embassy alerts and press scanning

**Only countries with open commercial flights included