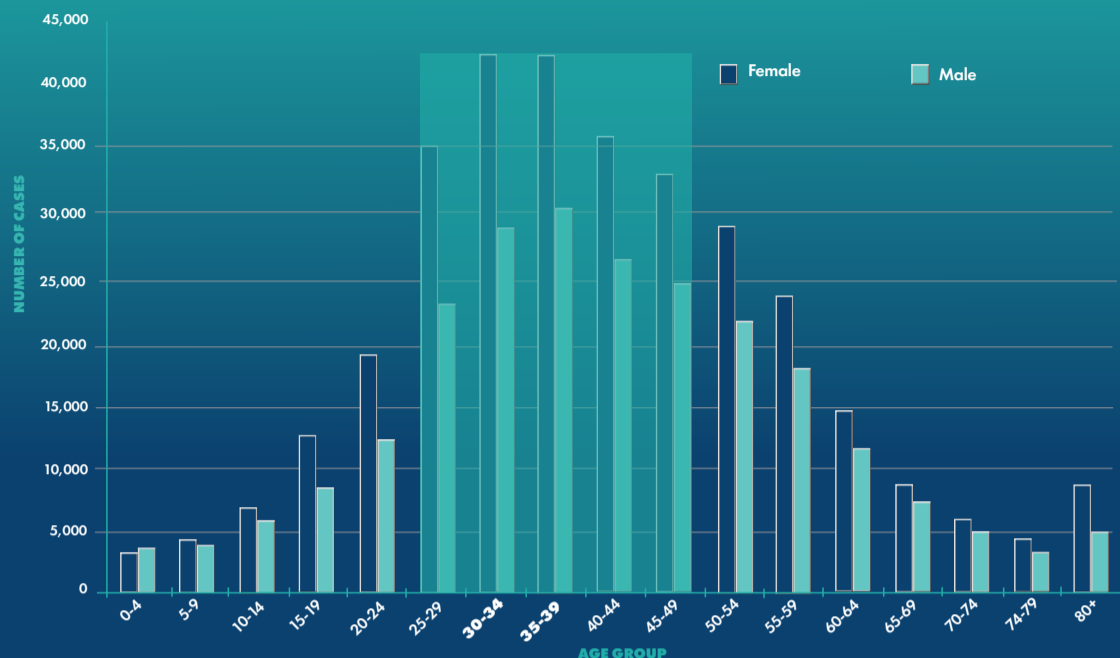


Addressing COVID-19 in South Africa



To understand the impact of COVID-19, demography and epidemiology must be taken into account.

Variation by geography too, shouldn't be understated.



26.9%



Majority of deaths among those in the **60-69** age group

Deaths by Provinces

Western Cape **25.9%**

Gauteng **25.4%**

Eastern Cape **19.3%**

KwaZulu Natal **15.6%**

Free State **5.3%**

Mpumalanga **3.1%**

Limpopo **2.2%**

North West **2.0%**

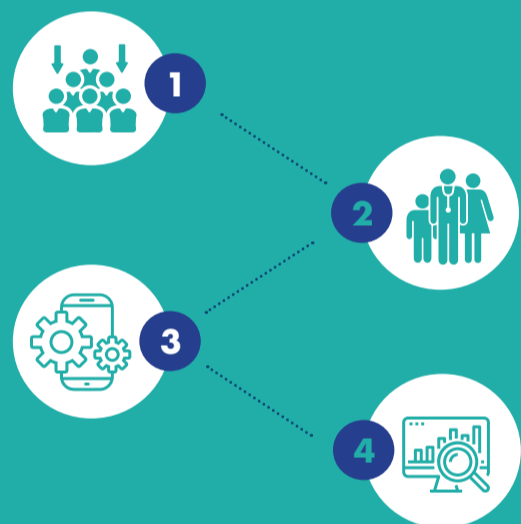
Northern Cape **1.2%**



Most reported cases were likely to be females between age **25-49**

Source: NICD (data from March to August, 2020)

Innovations to estimate and respond to COVID-19



- 1 Civil registration data to estimate excess mortality. (SAMRC)
- 2 Demographic and health surveillance sites to monitor utilization of health services and long-term impacts. Collection and disaggregation of demographic and health surveillance data to monitor short and long-term impacts. (SAPRIN)
- 3 Mobile technology to conduct the National Income Dynamics Study – Coronavirus Rapid Mobile Survey (NIDS-CRAM)
- 4 Developing the South Africa COVID-19 Vulnerability Index (Stats SA)

Socio-economic Impacts of the Pandemic



EMPLOYMENT

Unemployed increased by **2.8** million rising from **43%** to **53%** between Feb-Apr 2020



EDUCATION

40% of school days lost for most children in 2020. Increasing inequality as wealthy children twice likely to attend school



HUNGER

Higher in July/August 2020, adult hunger was at **16%**, child hunger at **11%** & **37%** of households had no money for food



MENTAL HEALTH

Depressive symptoms doubled between 2017 and June 2020 from **12%** to **24%** of individuals



About **2** out of every **5** of **11.3 million** applicants received the special COVID-19 Social Relief of Distress (SRD) grant that has brought millions of previously unreached individuals into the system

(NIDS-CRAM Wave 2)

Source: Wave 2 National Income Dynamics Study (NIDS) – Coronavirus Rapid Mobile Survey (CRAM)

Government responses to mitigate the impact of the pandemic

- Social grants
- Social insurance
- Food parcel distribution
- Shelters for the homeless
- Infrastructure grants for schools to resume teaching and learning
- Support for Early Childhood Development programmes
- Measures to safeguard against gender-based violence and femicide



More details and resources on - <https://bit.ly/37i4Pyh>